

PRPA Annual June Outing

The biggest event of the PRPA year is the annual outing which takes place on a weekend in June.

The Outing typically begins on Friday evening with the Annual General Meeting and a presentation by a guest speaker. A variety of photographic tours and workshops are offered on Saturday morning & afternoon and on Sunday morning. The banquet and awards presentations are held on Saturday evening and include the Showmanship slide show competition and a slideshow of winning entries from the year's competitions. Prints entered in the print competitions are on display during the weekend.

The best part of the Outing is the opportunity to meet and fellowship with other PRPA members, and to view the photographs they had entered in the competitions during the previous year.

Member clubs of the PRPA take turns hosting the Outing. The Outing usually takes place on a weekend in mid June at a location alternating between Alberta and Saskatchewan. For more information on the upcoming Outing, see the PRPA website.

Application for Membership in PRPA

I hereby apply for membership in the PRPA
for year ending June 30, 20__.

Enclosed is my membership fee of \$35 (checks payable to "PRPA").

Name _____

Address _____

City _____ Postal Code _____

Phone _____ Cell Phone _____

Email _____

I am a member of (photography club) _____

(or) I am not affiliated with any photography club (✓) _____

Prairie Focus is available to members on the PRPA website. Check here (✓) if you would also like a printed copy mailed to you ____.

Date _____ Signature _____

mail to: PRPA Memberships, Box 2254, Swift Current, SK S9H 4X6

You can also apply for or renew memberships on the website.



PRPA

www.prpa.photography

Prairie Region of Photographic Arts

*prairie photographers sharing
photographic experiences*



Little Church on the Prairie
by Paule Hjertaas, Regina Photo Club
Third, Spring Digital Competition 2019

Alberta  Saskatchewan  Manitoba

Membership

The Prairie Region of Photographic Arts is a regional association of amateur photographers in Alberta, Saskatchewan and Manitoba, who have a wide variety of photographic interests and experience.

Individual Membership in PRPA provides you:

- participation in print and digital image competitions
- participation in the print circuits
- the quarterly newsletter “Prairie Focus”

Club Membership provides all members of your club:

- participation in the two club competitions
- participation in the Hand of Man and Artistic Expressions competitions
- the quarterly newsletter “Prairie Focus” by email

Print Circuits

The PRPA print circuits provide an opportunity to have your photos critiqued by other circuit members. The circuits can be especially valuable for individual members who have no active camera club nearby. Learn from positive criticism of your work and evaluate the work of others. It can be fun!

Prairie Focus

This quarterly newsletter keeps the members of PRPA informed and in touch. The newsletter contains:

- information on upcoming PRPA competitions & events
- competition results and images of winning photos
- reports on the PRPA board meetings and the AGM

Website

At www.prapa.photography you will find:

- competition rules and entry forms
- results and winning images of past competitions
- current and past issues of the *Prairie Focus* newsletter
- membership forms and PRPA bylaws
- contact information and links to member camera clubs

Competitions

PRPA provides the opportunity to compete with other amateur photographers beyond your local camera club. This is especially advantageous for members of small clubs or individuals in areas lacking a club. The competitions are friendly and the judges’ comments provide helpful feedback on ideas to improve your photos. Prizes are certificates and ribbons.

PRPA member clubs take turns judging the competitions. Each club is requested to judge at least one competition each year.

Fall Competitions—November 15 deadline

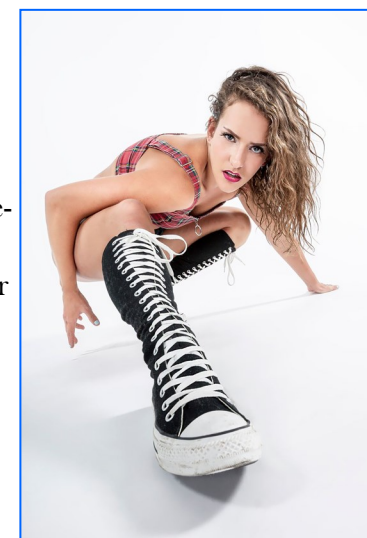
- ◆ **Everest Club Competition**—digital image
- ◆ **Fall Digital Image**
- ◆ **Russell**—pair of digital images depicting opposites
- ◆ **Hand of Man**—digital image
- ◆ **Gail Christensen Artistic Expressions**—digital image
- ◆ **Single Song Digital Slideshow**

Spring Competitions—April 1 deadline

- ◆ **Gerry Fish Club Competition**—prints
- ◆ **Attanyi Salon**—prints
- ◆ **Curtiss Lund Altered Reality**—prints
- ◆ **Human Portraiture**—prints
- ◆ **Sports in Action**—prints
- ◆ **Portfolio Print**
- ◆ **Spring Digital Image**

Outing Competitions

- ◆ **Showmanship**—slide show competition held at the Outing
- ◆ **Outing Competition**—prints and/or digital images of photos taken at the June Outing



Sneaker Attack
by Ken Greenhorn, SCC
Best Portrait, Everest 2020